

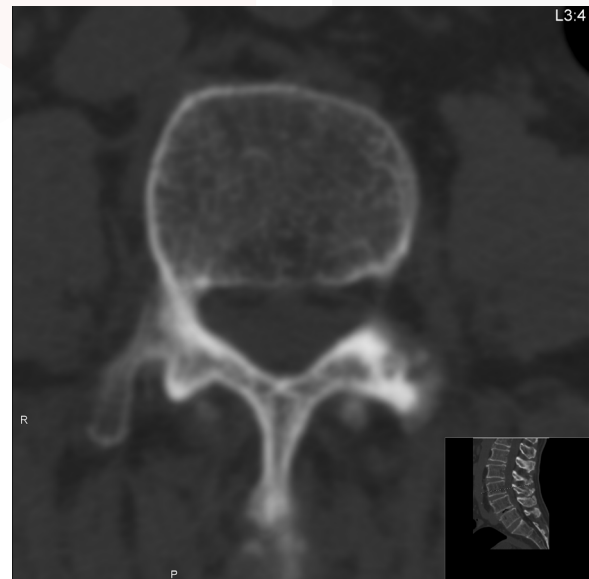
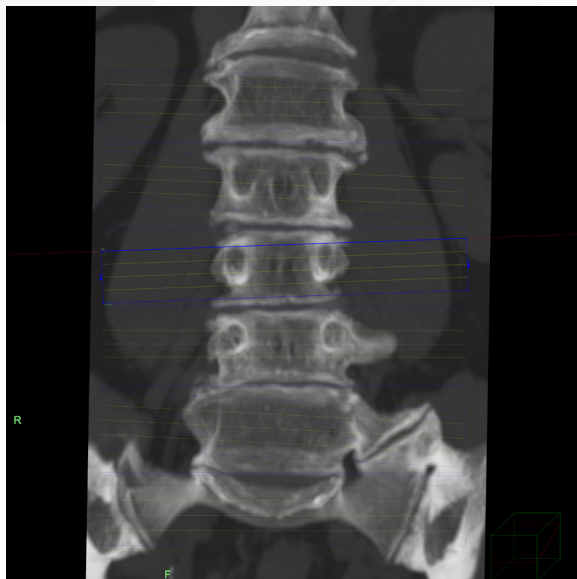
Advanced MPR Batch

Create multiplanar reconstructions with ease

Create multiplanar reconstruction cross-sectional images through the vertebral bodies and intra-vertebral disc space by dropping points on MPR images. Cross-sections can be viewed and easily edited to determine spacing, slice thickness and number of slices. Multiple output options are available to save the sequential images as a new series, or as printed images.

Key features:

- Creates multiple level batch series based on user defined points
- Customizable slice thickness and number of images to match facility protocol
- Adjustable FOV, slice angle and spacing works with all curvatures
- User defined labels to identify each vertebral position
- Export batch file as a new series for easy interpretation
- Cross-sectional view with reference line can be embedded in each output image



Japan Office

1-4-28 Mita, Minato-ku, Tokyo, 1080073, Japan
Tel: +81 3 5427 1903 <http://www.zio.co.jp>

US Office

1301 Shoreway Road, #325, Belmont, CA 94002-4105, USA
Tel: +1 650 413 1300 <http://www.ziosoftinc.com>